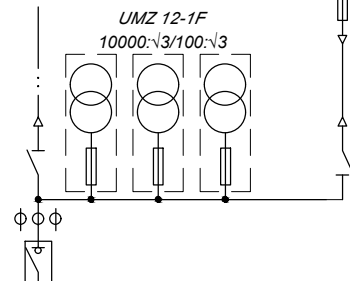


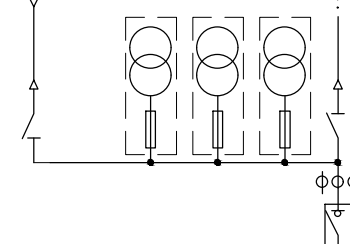
PIEVADS 1

P/P Nr.1
10/0.4kV



PIEVADS 2

P/P Nr.2
10/0.4kV



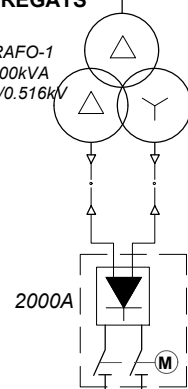
10kV 1.sekcija

10kV 2.sekcija

M-10-1

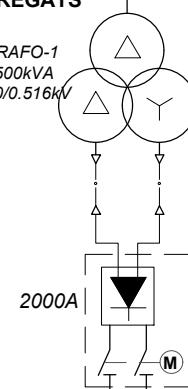
1.AGREGĀTS

TRAFO-1
1500kVA
10/0.516kV



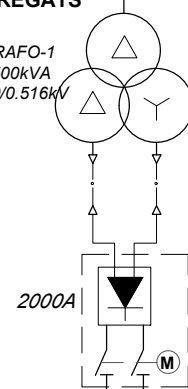
2.AGREGĀTS

TRAFO-1
1500kVA
10/0.516kV



3.AGREGĀTS

TRAFO-1
1500kVA
10/0.516kV



17. vilces apakšstacijas
vienlīnijas shēma

+600V

-600V

Rezerve A-100x10

Rezerve

1701

1702

1703

1704

1705

1706

1751

1752

1753

1754

1755

1755

1756